



RITMSCENAR® therapy in dental practice

Dr. Iveta Iontcheva-Barehmi DMD, MS,

SCENAR[®] – Pain Management Solution

**SELF
CONTROLLED
ENERGO
NEURO
ADAPTIVE
REGULATOR**



USA FDA K092117, CE 0120, Health Canada DL:86149

SCENAR electrode is applied via the skin - based on the premise that pathological changes in the body are registered not only in the brain but also reflected in areas on the skin.

Connections between the skin and the nervous system allows the possibility to regulate the body's functions

SCENAR is used to affect the skin on those places that will lead to shortest and faster regulation of the whole body.

Electrotherapy



Electrotherapy is used for relaxation of muscle spasms, prevention and retardation of disuse atrophy, increase of local blood circulation, muscle rehabilitation and re-education, maintaining and increasing range of motion, management of chronic and intractable pain, post-traumatic acute pain, post surgical acute pain, immediate post-surgical stimulation of muscles to prevent venous thrombosis, and wound healing.

Dental electrodes



Dental diseases in SCENAR practice

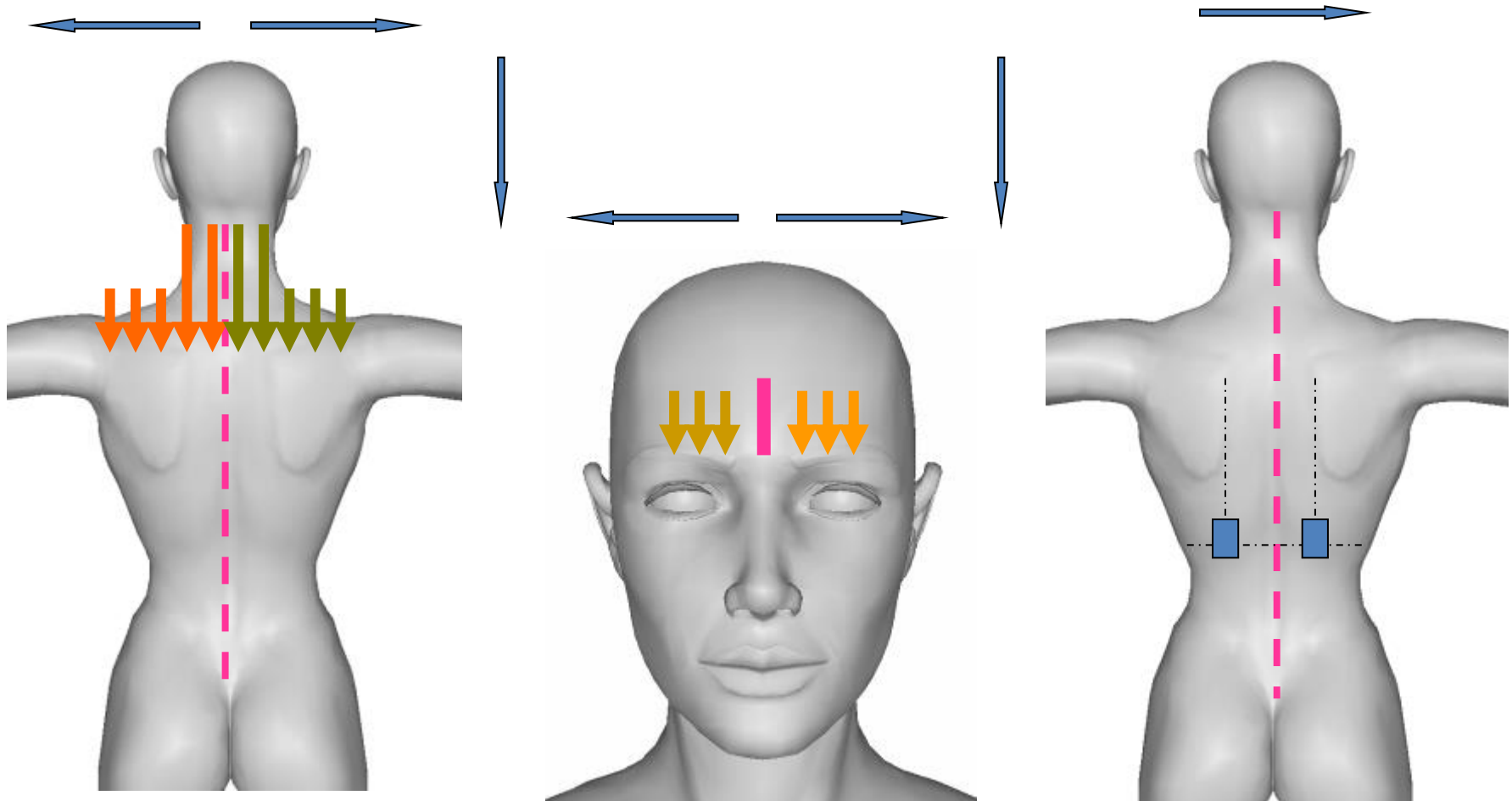
- Tongue Disorders
- Salivary Gland Disorders
- Mouth Sores
- Tooth Disorders : Toothaches, Cavities, Pulpitis, Abscess
- Gingivitis
- Periodontitis
- Temporomandibular Disorders

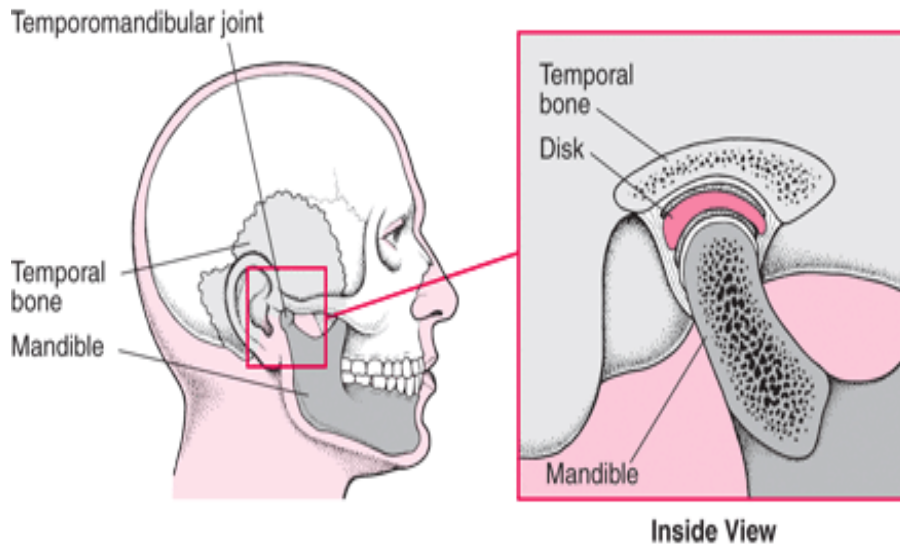
General applications

- Combination of general, reflexology, special autonomic nervous system protocols, local and reciprocate zones.
- During one procedure we use one general or two *reflexology* zones and one or two local or reciprocate zones.
- First five or six sessions we do every day, next sessions can be in one or two days.
- Usually SCENAR®Technology course consists of 7 or 10 procedures, but exactly it depends of a patient state and improvement.
- With chronic disorders like periodontitis or TMJ syndrome we suggest to make 2 preventive courses in a spring and in an autumn, which can has 5 or 6 sessions in two or three days.

General zone — General zone - 3 Lines 6 - Points Collar zone

Action on three pathways, 6 points, collar zone, projection of the gastro-intestinal tract, active points and zones leads to the activation of the great number of the nerve cells that contain all the sets of RPs required for the desired therapeutic result. Given the evidence that SCENAR therapy is based on the mechanisms of the activation of peptides, allows one to look upon the “organism – device” system as a generator of Regulative Peptides.

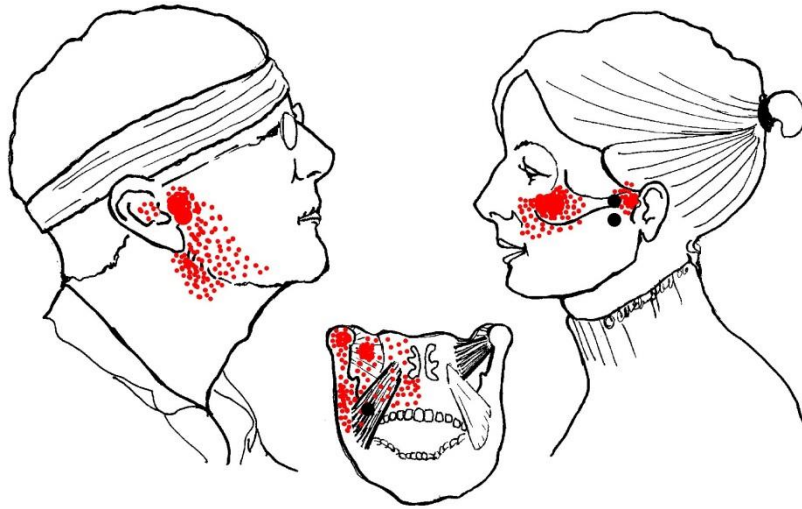




TMJ Syndrome

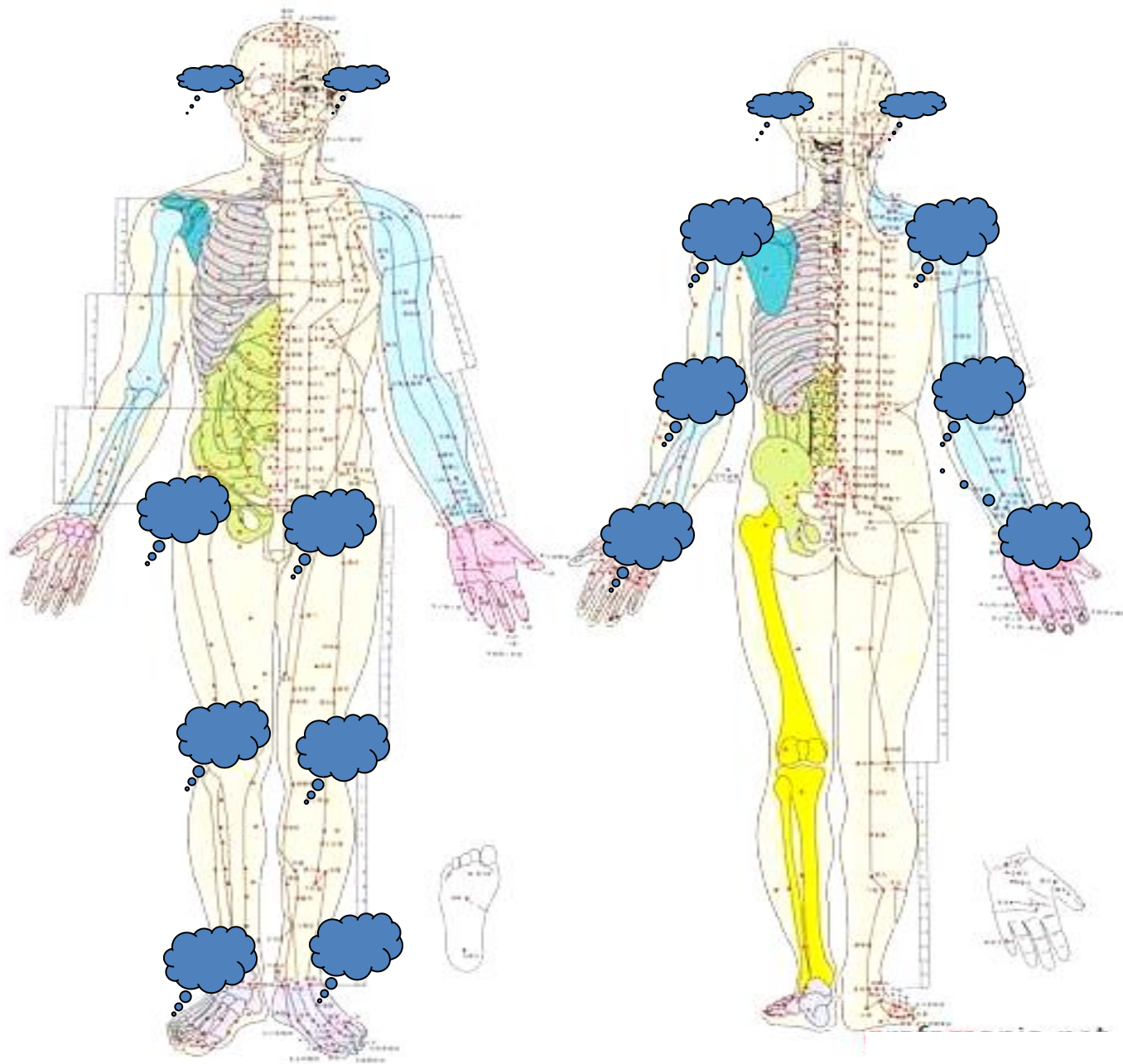
- Another very common complaint that SCENAR has great success with is Temporomandibular Joint syndrome.
- This condition has earned the nickname of “The Great Imposter” because it produces such a wide variety of symptoms and mimics so many different diseases. It can cause facial and neck pains, difficulty opening the mouth or chewing, earaches and congestion, sinus pain (often diagnosed as infections), headaches, and shoulder pain.
- Often there is no pain, only dizziness, tinnitus (ear ringing), and/or hearing loss.

Local treatment



- Local SCENAR treatments can be used as well to cure TMJ syndrome

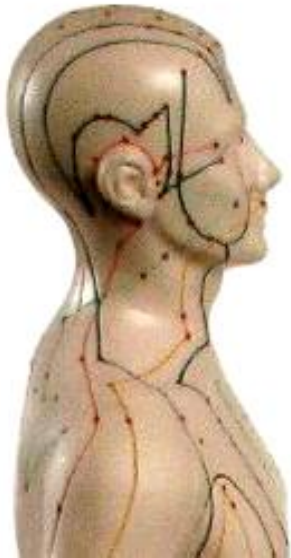




“Wave” method

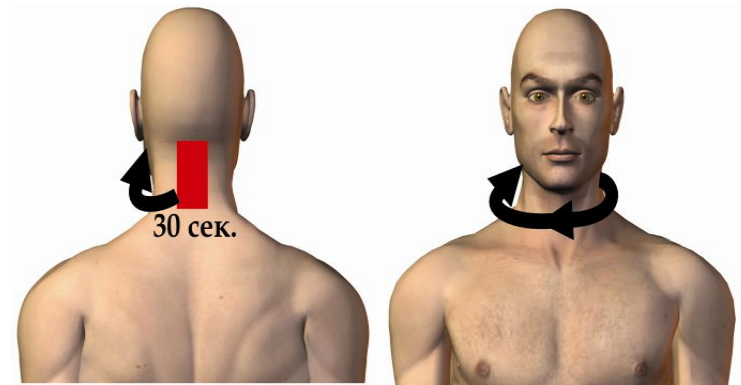
- Treat each joint with small spiral movement for 30 seconds each
- D-0, Fm+
- Start with ankle, after 30 sec move electrode to knee, hip, TMJ, cross hair line and treat same joints on the opposite side
- Next procedure – start from a wriste, go to elbow, shoulder, TMJ and via hair line go the opposite side

Meridians treatments



- Treat meridians (TH, SI, GB) which pass around TMJ
- We apply SCENAR with point electrodes on the face in the TMJ projections
- But also we treat meridian lines on limbs
- Settings - $F = 60$ or 90Hz or FM
- Energy - Comfortable
- Treatment Duration - 15 minutes; repeat daily as needed

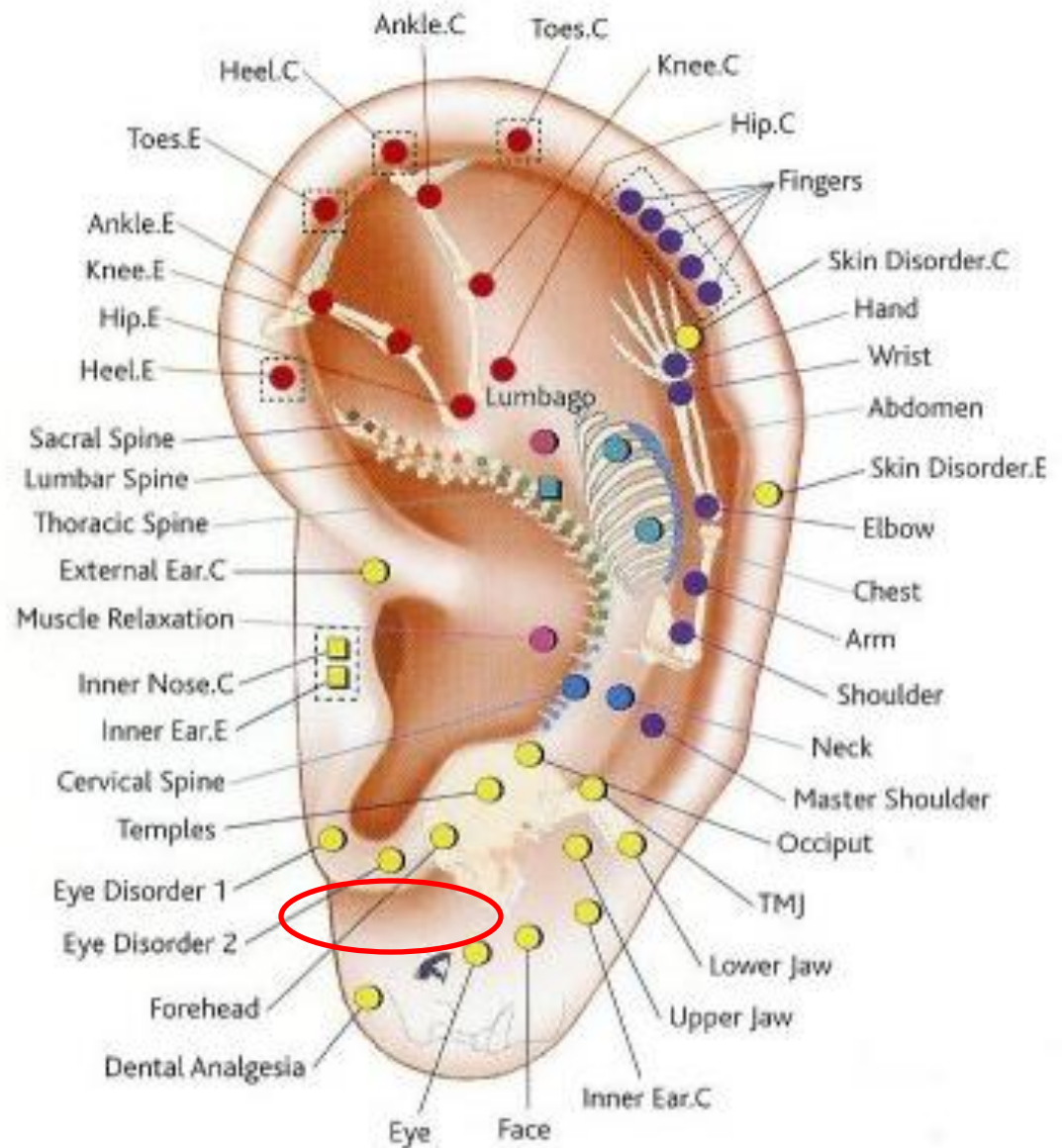
Reflexology and Energy zone – Neck rings



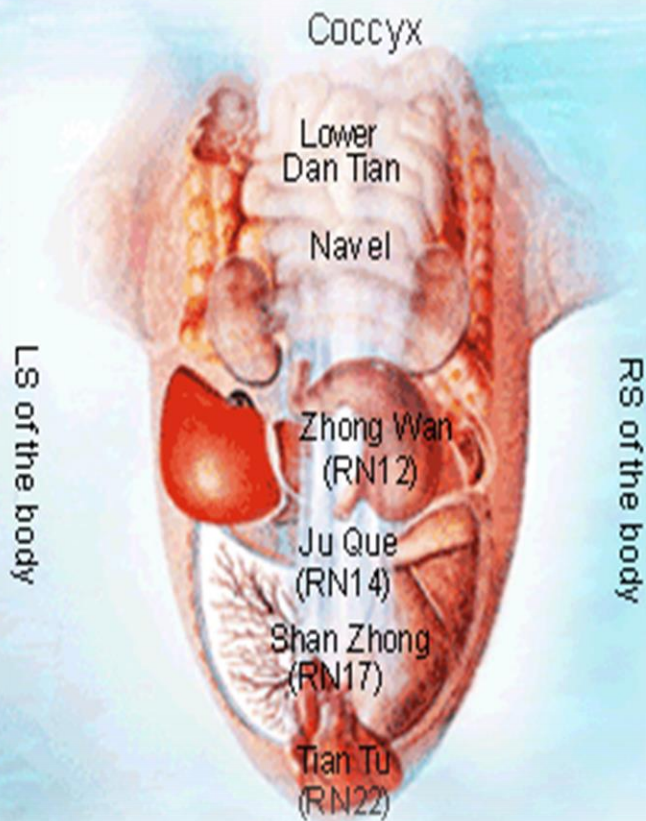
X-ray showing as impacted Wisdom Tooth on the left side of the photograph, missing teeth and generalized periodontal bone loss. On the right of the photograph the TMJoint shows degenerative change. There is also a root canalled tooth on the lower jaw.



A close-up photograph of a person's ear. The ear is wearing a black, cylindrical earplug. A gold-colored earring is visible, featuring a small, round, textured ball. The person has light brown hair, and a finger is visible near the ear.



Tongue Disorders



To treat any tongue complaints we use co-axial electrodes or external electrodes

We put electrode to the tongue directly in subjective mode with low Energy level and hold there for few seconds or 1-2 minutes

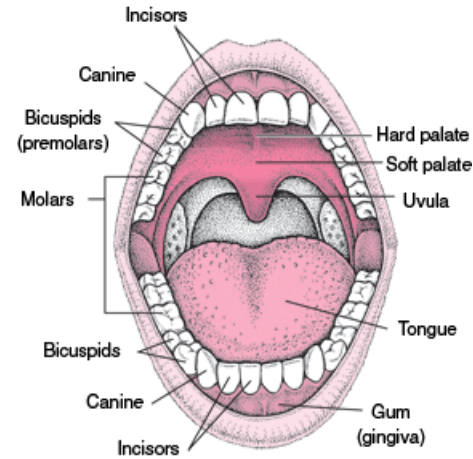
Tongue Disorders

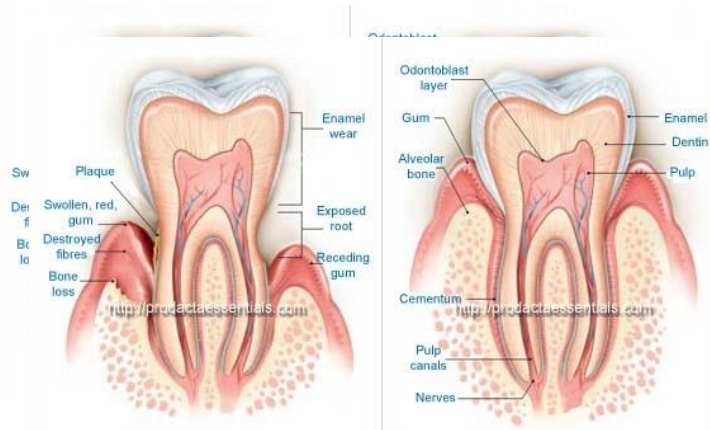
- **Injury:**

Traumatic injury is the most common cause of tongue discomfort. The tongue has many nerve endings for pain and touch and is more sensitive to pain than most other parts of the body.

- **Sores and Bumps:**

Sores on the tongue can be caused by allergic reactions, oral herpes simplex virus infection, canker sores, tuberculosis, bacterial infections. Although small bumps on both sides of the tongue are usually harmless, a bump on only one side may be cancerous.





Periodontitis

- In Scenar Technology to reach good result and dynamic we combine General zones to regulate functions of main adaptation and self-healing systems (nervous, hormonal and immune) and local zones
- Also we use special algorithm of Energy Protocols (meridians and chakras)

Pain Free Dental Treatment

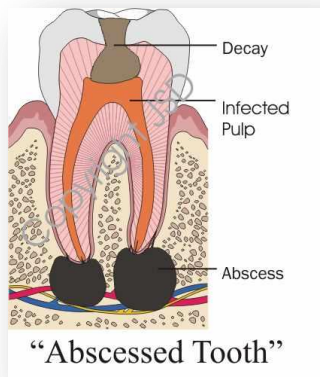
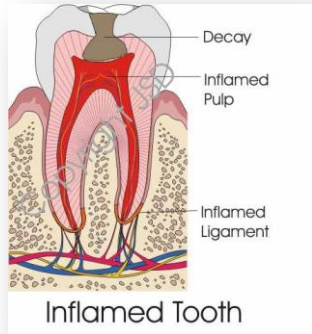
SCENAR therapy is effective not only for acute dental disease such as pulpitis, but for periodontitis as well. Patients suffering from parodontosis and periodontitis have shown decreased odontorrhagia and teeth mobility as well as delayed gingival retraction.

Patients who received 3 - 5 sessions of SCENAR therapy for deep cavities showed 100% success without exacerbation, while others, without SCENAR therapy, showed 85% only. Filling materials were the same. Patients have also reported positive effect for pulpitis. Usually, 40% of patients experience exacerbations. But after 3 - 5 daily sessions of SCENAR therapy, there were no exacerbations at all from the very first session.

Pain Free Dental Treatment

- Dr Magdalene Ting BDSc (WA) Dental Surgeon General and Cosmetic Dentistry reports on the use of SCENAR device replacing anaesthetic during dental treatment. No needles, no pain, X-rays before and after.
- SCENAR therapist Cyril Bourke and Dr Magdalene Ting (BDSc) joined forces to perform a composite restoration with no local anaesthetic. Instead the patient had a RITM SCENAR Professional 2003 applied to the upper jaw via electrode pads at a frequency of 350Hz.
- The lesion had extended past the DEJ into the dentine of the tooth. With the use of the SCENAR device no sign of discomfort was noted during the time of the restoration or after the procedure. Drug free, pain free dental treatment.
- Case Study - See what Cyril Bourke had done and the results.

Toothaches



- Common tooth disorders include cavities (caused by tooth decay), pulpitis, periapical abscess, impacted teeth, and malocclusion
- **Pain** affecting an individual tooth (toothache) is probably the most recognized symptom of a tooth disorder. A tooth may be painful all the time or only under certain circumstances, as when chewing or when tapped by a dental instrument. Pain in a tooth suggests tooth decay or gum disease. However, pain may also result when roots are exposed, when people chew too forcefully or grind their teeth (bruxism), or when a tooth is fractured. Sinus congestion can cause similar symptoms of pain in the area of the upper teeth.

Toothaches
















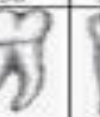









We apply SCENAR in two different directions:

1. A method of applying to affected tooth with electrode means shaped to provide a substantial area of engagement with the tooth, and passing a direct SCENAR impulses through the tooth via said electrode
2. A method of applying SCENAR electrodes to skin projections



Correspondence SCT

- We use previous table of teeth connections with inner organ dis-functions and disorders
- Looking to corresponding tooth we treat local organ projection and meridian
- We use objective and subjective modes, different frequencies and modulations
- Time of treatment depends of a patient response, we called it Small Asymmetry

Loneliness, Acute Grief, Humiliated, Trapped, Inhibited, Lack Joy Greed, Not lovable	Anxiety, Self-Punishment, Broken Power, Hate, Low self-worth, Obsessed	Chronic Grief, Overcritical, Sadness, Controlling, Feeling trapped, Dogmatic, Compulsive, Upright	Anger, Resentment, Frustration, Blaming, Incapable to take action, Manipulative	Fear, Shame, Guilt, Broken will, Shyness, Helpless, Deep exhaustion	Fear, Shame, Guilt, Broken will, Shyness, Helpless, Deep exhaustion	Anger, Resentment, Frustration, Blaming, Incapable to take action, Manipulative	Chronic Grief, Overcritical, Sadness, Controlling, Feeling trapped, Dogmatic, Compulsive, Upright	Anxiety, Self-Punishment, Broken Power, Hate, Low self-worth, Obsessed	Loneliness, Acute Grief, Humiliated, Trapped, Inhibited, Lack Joy Greed, Not lovable						
Duodenum Middle Ear, Shoulder Elbow, CNS S-I joint, foot, toes	Sinus: Maxillary Oropharynx, Larynx	Sinus: Paranasal and Ethmoid, Bronchus, Nose	Sinus: Sphenoid Palatine Tonsil Hip, Eye, Knee	Sinus: Frontal Pharyngeal Tonsil Genito-Urinary System	Sinus: Frontal Pharyngeal Tonsil Genito-Urinary System	Sinus: Sphenoid Palatine Tonsil Hip, Eye, Knee	Sinus: Paranasal and Ethmoid, Bronchus, Nose	Sinus: Maxillary Oropharynx, Larynx	Stomach, Jejunum Middle Ear, Shoulder Elbow, CNS S-I joint, foot, toes						
Heart, Small Int., Circulation/Sex, Endocrine	Pancreas Stomach	Lung Large Intestine	Liver Gallbladder	Kidney Bladder	Kidney Bladder	Liver Gallbladder	Lung Large Intestine	Stomach Spleen	Heart, Small Int., Circulation/Sex, Endocrine						
															
32	31	30	29	28	27	26	25	24	23	22	21	20	19	18	17
															
Heart, Small Int., Circulation/Sex, Endocrine	Lung Large Intestine	Pancreas Stomach	Liver Gallbladder	Kidney Bladder	Kidney Bladder	Liver Gallbladder	Spleen Stomach	Lung Large Intestine	Heart, Small Int., Circulation/Sex, Endocrine						
Shoulder, Elbow Neum, Middle Ear Peripheral Nerves S-I joint, foot, toes	Sinus: Paranasal and Ethmoid, Bronchus, Nose	Sinus: Maxillary Larynx, Lymph, Oropharynx Knee	Sinus: Sphenoid Palatine Tonsil Hip, Eye Knee	Sinus: Frontal Ear, Pharyngeal Tonsil Genito-Urinary System	Sinus: Frontal Ear, Pharyngeal Tonsil Genito-Urinary System	Sinus: Sphenoid Palatine Tonsil Hip, Eye Knee	Sinus: Maxillary Larynx, Lymph, Oropharynx Knee	Sinus: Paranasal and Ethmoid, Bronchus, Nose	Shoulder, Elbow Stomach, Jejunum, Middle Ear Peripheral Nerves S-I joint, foot, toes						
Loneliness, Acute Grief, Humiliated, Trapped, Inhibited, Lack Joy Greed, Not lovable	Chronic Grief, Overcritical, Sadness, Controlling, Feeling trapped, Dogmatic, Compulsive, Upright	Anxiety, Self-Punishment, Broken Power, Hate, Low self-worth, Obsessed	Anger, Resentment, Frustration, Blaming, Incapable to take action, Manipulative	Fear, Shame, Guilt, Broken will, Shyness, Helpless, Deep exhaustion	Fear, Shame, Guilt, Broken will, Shyness, Helpless, Deep exhaustion	Anger, Resentment, Frustration, Blaming, Incapable to take action, Manipulative	Anxiety, Self-Punishment, Broken Power, Hate, Low self-worth, Obsessed	Chronic Grief, Overcritical, Sadness, Controlling, Feeling trapped, Dogmatic, Compulsive, Upright	Loneliness, Acute Grief, Humiliated, Trapped, Inhibited, Lack Joy Greed, Not lovable						

Acumeridian Tooth-Organ Relationships

[with Autonomic/Neuropeptide Emotion correlations]

Abridged, from various sources – credits on website.

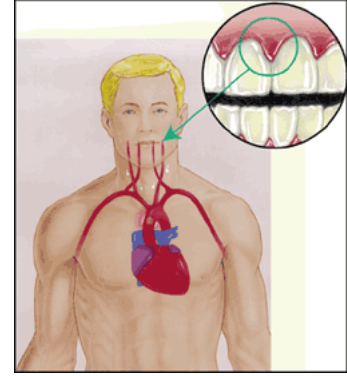
Dr. Ralph Wilson www.NaturalWorldHealing.com

Gingivitis

- Gingivitis results most often from inadequate brushing and flossing but may result from medical disorders or the use of certain drugs.
- The gums are red and swollen and bleed easily.
- Good oral hygiene, frequent professional cleanings, adequate nutrition, and mouthwashes usually help.
- SCT can heal this disorder



Periodontitis



- Plaque and tartar build up between the teeth and gums, then spread to the bone under the teeth.
- The gums swell and bleed, the breath smells bad, and teeth become loose.
- Doctors take x-rays and measure the depth of pockets in the gums to determine how severe periodontitis is.
- Repeated professional cleanings and Scenar Treatment are needed.
- In Scenar Technology to reach good result and dynamic we combine General zones to regulate functions of main adaptation and self-healing systems (nervous, hormonal and immune) and local zones
- Also we use special algorithm of Energy Protocols (meridians and chakras)

Bruxism treatment , Alveolitis sicca (dry socket)



Use of the External Toothbrush Electrode for the Prevention and Treatment of Periodontal Diseases

- A group of 14 patients aged 15 to 62 was observed, all with at least 6 months of periodontal disease symptoms. Some of the patients (5 persons) complained of itching, pain and bleeding of the gums increasing during tooth brushing or when biting on solid foods. General weakness, temperatures of up to 38C were observed in such cases. Gums on inspection were swollen and hyperemic, bleeding on touch. Use of Metrogil-Denta before SCENAR therapy improved the condition of gums but failed to stop the bleeding.
- 9 patients were diagnosed with periodontitis, since pain under intense chewing and teeth movement under pressure was observed. Swelling, sensitivity and bleeding was observed in their gums. In 6 patients the condition was general, in 3 limited to areas of tooth anomalies. No visible periodontal pockets were found.
- All patients were offered the use of the SCENAR toothbrush twice per day, for 2-3 weeks, brushing their teeth after breakfast and before bed for at least 2-3 minutes. The SCENAR impulse intensity was to be comfortable (slight pricking sensation), no specific recommendations on toothpaste selection was given.
- Considering the sensitivity and swelling of affected gums it was recommended in the first stages to not attempt vigorous massaging motions, but to keep the brush near the gum, slowly moving it over the jaws and mouth cavity. During these procedures many cases of bleeding were reported, but after rinsing the mouth they stopped or subsided.
- After 5-7 days of treatment the incidence of bleeding decreased to a statistically valid level, in some cases stopping completely. The patients reported their sensations as slight “contraction” of the gum and a fresh sensation in the mouth. The only patients reporting worsening of their condition after the initial periods were 3 young patients that brushed their teeth too vigorously.
- On completion of the course, all patients reported a significant improvement in their periodontal condition; in most cases swelling, pain and bleeding were gone.
- The most important result was the improvement of tooth fixation, with no movement under pressure or pain under sufficient chewing loads observed after treatment.
- The research was performed under constant dentist control; it must be noted that all patients received only local SCENAR treatment, without additional other therapy, including general areas.
- This demonstrated the efficacy of SCENAR treatment in gingivitis and periodontitis using the toothbrush electrode.

Complications After Dental Treatment

- Swelling is common after certain dental procedures, particularly tooth extractions and periodontal surgery.
- A dry socket (exposure of the bone in the socket, causing delayed healing) may develop after a lower back tooth has been removed and the normal blood clot in the socket is lost.
- Bleeding after oral surgery is common. Bleeding in the mouth may appear worse than it is because a small amount of blood may mix with saliva.

SCENAR vet



- SCENAR can help (with professional dental care) to solve some animal dental problems
- Bad breath is often a first indicator of dental disease: tartar, inflamed gums, or missing/broken teeth.
- Cats may exhibit increased drooling.
- Both cats and dogs can exhibit reluctance to eat or play with toys, "chattering" of the teeth when trying to eat, lethargy, bleeding gums, eroded teeth, and failing to groom (cats).
- Dental disease progresses in stages -if caught early, we can prevent further damage and save as many teeth as possible with SCENAR.

Thank you

